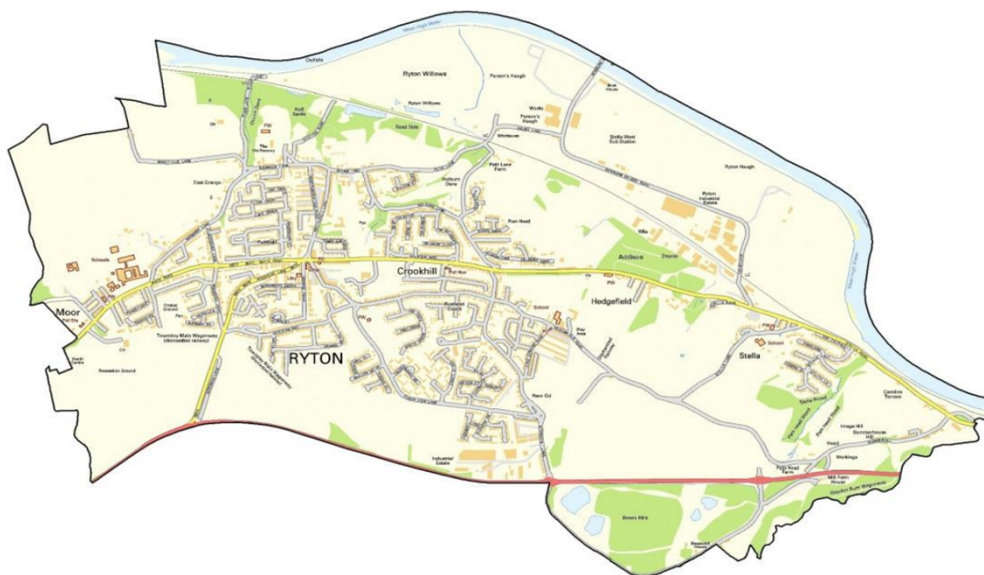


## Draft Word version

### Ryton, Crookhill and Stella Climate Action Plan

Ryton, Crookhill and Stella ward is located in the West of Gateshead. The area is largely rural with farms and woodland areas. This area includes Ryton, along with the smaller settlements of Stella, Stargate and Ryton Woodside. 5 schools within ward.



### Homes

Housing is of mixed age and tenure with the majority being privately owned.

Owner occupied: 64.9%

Gateshead household company rented: 15.8%

Private landlord rented: 17.7%

Registered social landlord rented: 1.6%

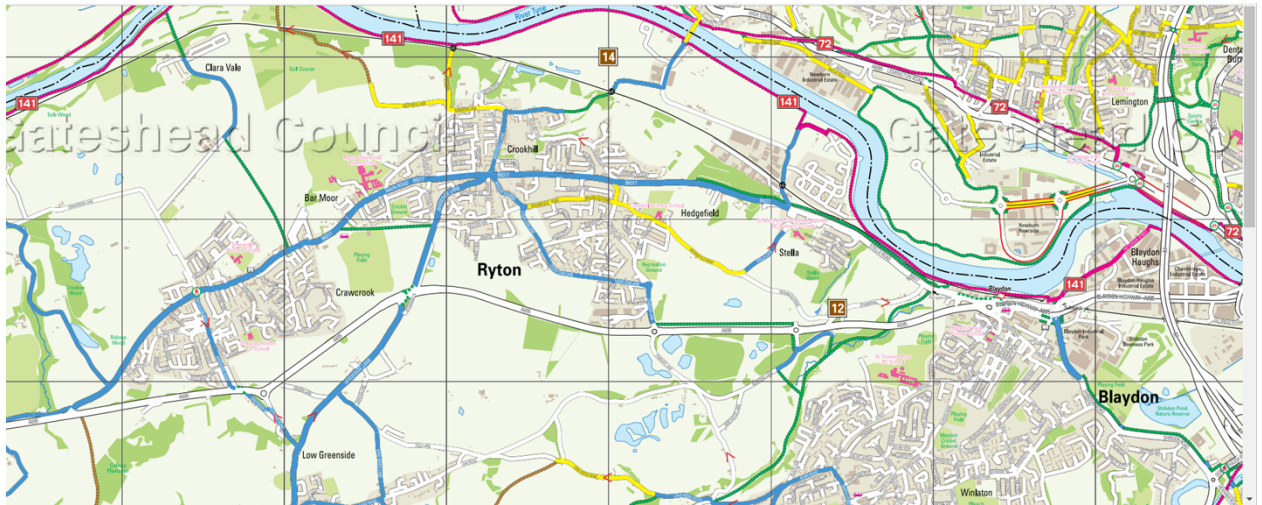
### Transport

74% of households own a car, 11% above the Gateshead average. 16% of its people utilise public transport for travel to work, 5% above the Gateshead average.

#### Public Transport

- Bus 10, 10A and 10B routes travel through Ryton and Crawcrook

## Cycle and walking routes



[Cycle-Map-Gateshead-North.pdf](#)

## EV/Car club infrastructure

- Lack of public EV chargers within ward

## Co2 emissions

CO2 emissions per person closely follow the average for wards of its size, with the place-based carbon calculator measuring the main sources of the ward's emissions to vary greatly across each LSOA. Many LSOA have higher average co2 emissions than the borough average.

The clear area for improvement is in emissions resultant from gas usage. Gas usage represents the second largest source of emissions per person behind consumption of goods and services in the ward and is rated at F by the carbon calculator for most of the ward, placing it in the bottom 15% in the country for similarly sized wards. Cars are also a large and common source of emissions within the ward. With an average rating of D it is only slightly behind the average for the country, but represents the third greatest source of emissions.



## Place-based carbon calculator

### Baseline

#### Transport

- Limited public transport to Newcastle and further
- Public transport usage lower than Gateshead average for daily

#### - Energy

- Emissions per person resultant from gas usage is rated at F for much of the ward, meaning it far exceeds the average for wards of its size.
- Emissions resultant from electricity usage follow the country's average.

#### Economy and Consumption

- Ryton has a Local Centre
- Recycling centre in Crawcrook

#### Woodland and Nature

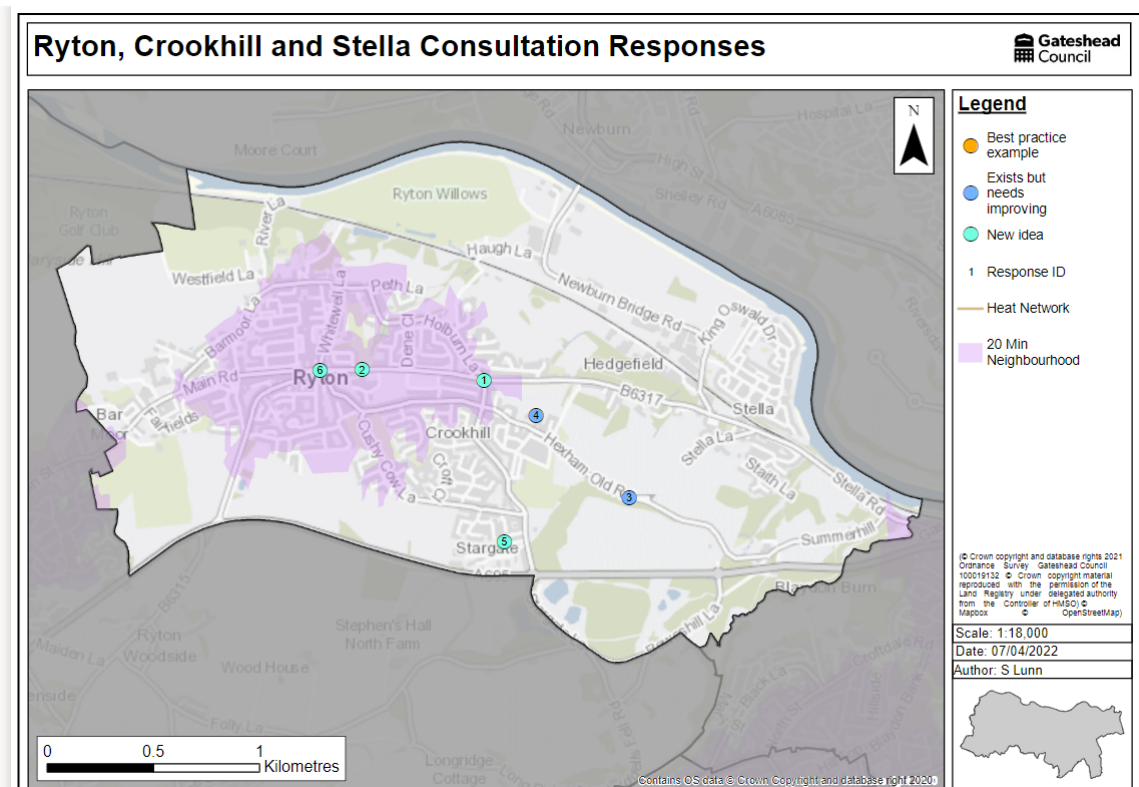
- Clara Vale nature reserve.
- Large amounts of open space

#### Adaptation

- Stella – Flood risk

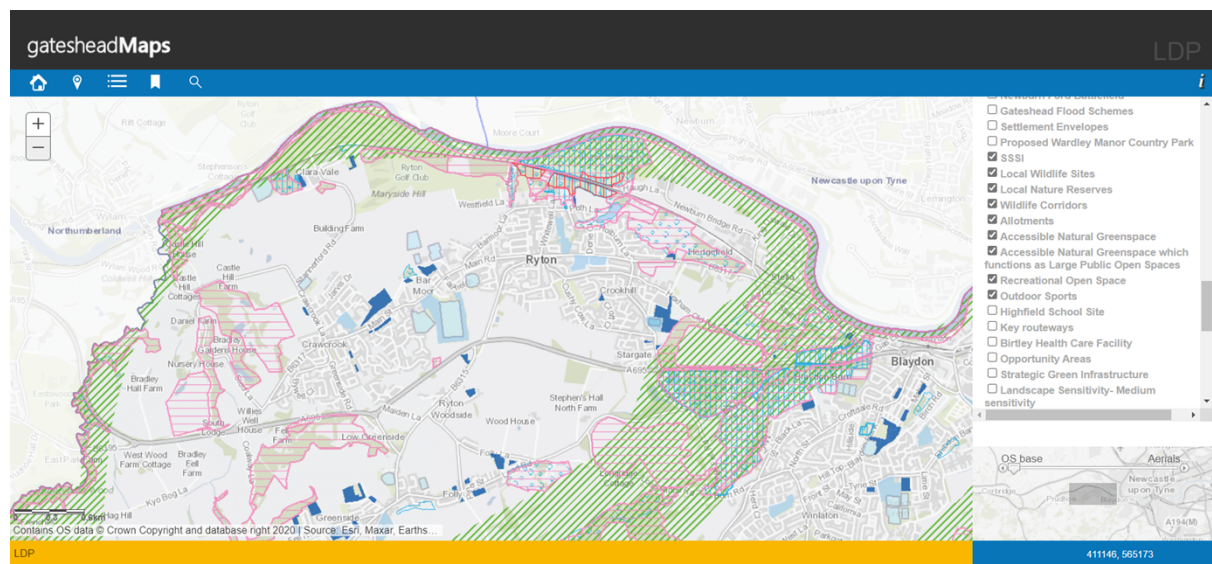
## 20 minute neighbourhood

Assessments of Local Centres in Gateshead are being carried out to identify locations that could become 20 Minute Neighbourhoods. 20 Minute Neighbourhoods are ones where there is a range of services available within an easy walking and cycling distance from where people live. Ryton Local Centre will be assessed as part of this, an initial map has been produced which shows the 10 minute walking distance into the centre, which is coloured purple on the map below. Once more detailed assessments have been made, this will inform the Ward Action Plans and other delivery mechanisms.



## Green Infrastructure

There are varying types of Green Infrastructure in Ryton including allotments, Local Nature Reserves and Recreational Open Space. Green Infrastructure provides opportunities for climate action and will be considered as part of the Ward Action Plan.



## **Priority Climate Actions for Ryton Crookhill and Stella**

Priorities are arising from the data on carbon emissions and from consultation.

- Keelmans way – maintenance and promotion
- Engaging with businesses in industrial estates to provide decarbonisation support and explore collaboration opportunities
- Local energy generation
- Flood adaptation – Stella and Ryton Willows
- Tree planting/orchard creation
- Public transport improvements
- Home energy improvements

### **Existing Good practice**

- Local centre exist within close proximity to a large proportion of residential areas - Increased use of local facilities/shops can be encouraged
- Green infrastructure including tree planting, Ryton Willows, Ryton Park, allotments (summerhill and stargate)

### **Barriers/Issues**

- Relatively high amount of private home ownership – Widespread introduction of household energy efficiency measures will be more difficult.
- Not well connected by public transport
- High Car ownership.
- Flood risk

### **Opportunities**

- Cycle/footpath infrastructure improvements
- Woodland/community garden/orchard creation opportunities

## **Organisations**

These are organisations that have expressed an interest in environmental issue sin the local area. Opportunities to get involved with local organisations can be found on the Our Gateshead website.

[Discover more... | OurGateshead](#)

- Friends of the Park
- Brighten Ryton
- Community Centre Community Hub – Ryton Cross
- Coop

Collaboration between the Council, local organisations, businesses and residents will be required to tackle climate change. It is hoped that these collaborations will emerge from this Ward Action Plan.

## Actions

The following table provides a list of potential climate actions in Ryton. Not all these action will be carried out in the short or medium term. Additional Actions will be added as part of the engagement process as well as identifying the responsible body to deliver the actions and funding.

Action	Responsible body	Timeframe	Funding	Cobenefits	priority
Haugh Lane pedestrian route and rail line crossing	GC			Health, Air quality	
Tree/orchard planting – Barmoor Hub/Rugby Club, park, school, farm land	Community	Short		Health	
Keelamns way connection to Clara Vale from Stella	GC, Sustrans	Short		Health, Air Quality	
Traffic Calming Ryton Centre co-op to Ferndale park or crossing	GC			Public Safety, Health	
Flood schemes	Environment Agency. LLFA.			Health	
Nature based solutions				Biodiversity	
School travel modal shift	GC, Schools, community	Short		Public Safety, Health, Air Quality	
Active travel promotion	GC, businesses	Short		Health, Air Quality	
Home improvement schemes	GC, Landlords, Homeowner RSPs			Health, Cost of Living	
Motor vehicle restrictions from Path head to Crookhill Hexham Old road	GC			Public Safety	
Reduce speed limit on A695	GC			Public Safety	
Main Road Ryton – new cycleway	GC, Sustrans			Public Safety, Health, Air Quality	

Once the Action List has been finalised, it will be reviewed and monitored regularly. Additional actions can be added or removed from the list as appropriate.

DRAFT